



Bridge Road

Sunninghill



On the ground floor there is a living room, family room, modern kitchen and a dining room with feature roof lantern and double doors leading out to a long south facing garden.

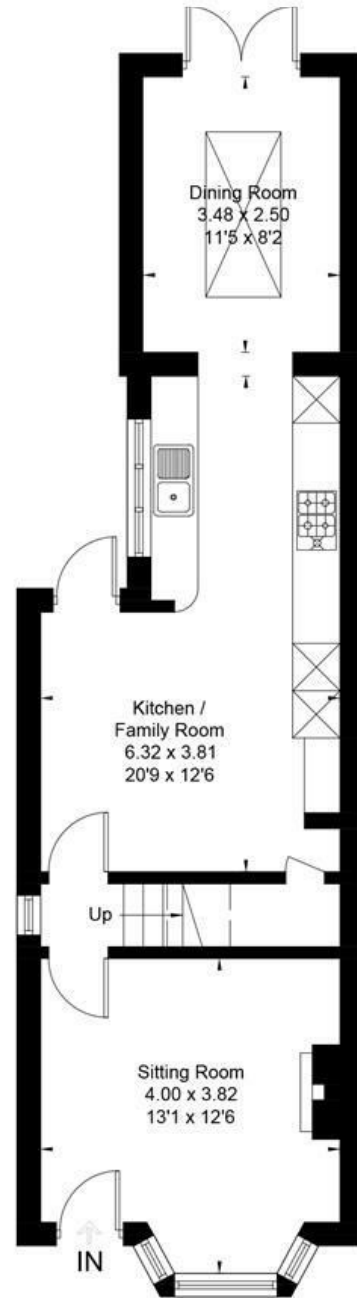
On the first floor there are three bedrooms and a family bathroom. The loft has been converted into the main bedroom with an en suite shower room.

Bridge Road is in the centre of Sunninghill Village. Nearby schools include Charters, Holy Trinity, St Francis, St Michael's and The Marist. The village has a number of local high street businesses and great restaurants and pubs. Nearby places of interest include Ascot Racecourse, Coworth Park, Guards Polo Club, Legoland, The Lexicon, Wentworth Club and Windsor Great Park. Sunninghill is also convenient for the M3, M4, M25 and Heathrow Airport.

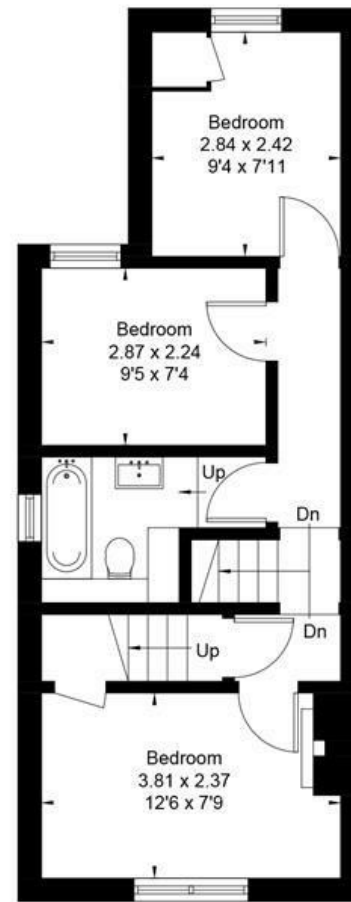
EPC rating E.




Approximate Area = 105.6 sq m / 1137 sq ft
Including Limited Use Area (2.2 sq m / 24 sq ft)

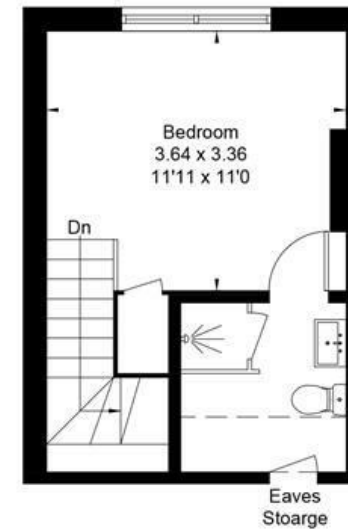


Ground Floor



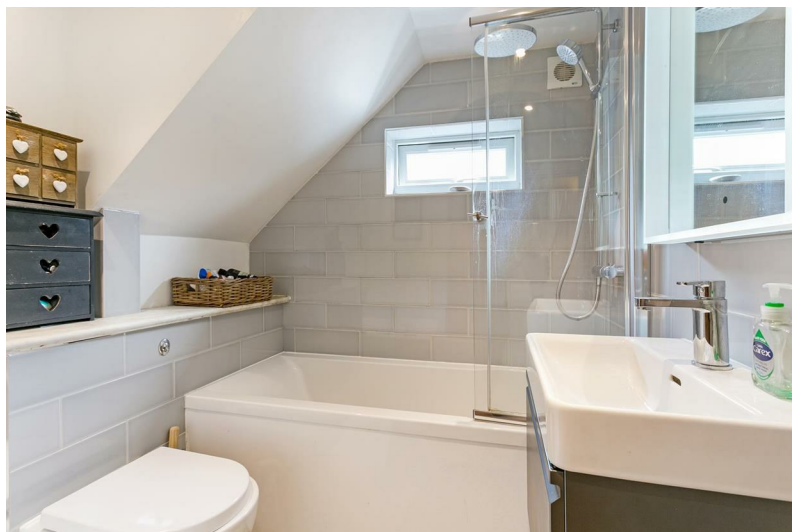
First Floor

 = Reduced head height below 1.5m



Second Floor

VIDEO VIEWING AVAILABLE - A four bedroom, two bathroom semi-detached house with a south facing garden close to Sunninghill High Street.



01344 627777

osborneheath.co.uk • ascotsales@osborneheath.co.uk • ascotlettings@osborneheath.co.uk